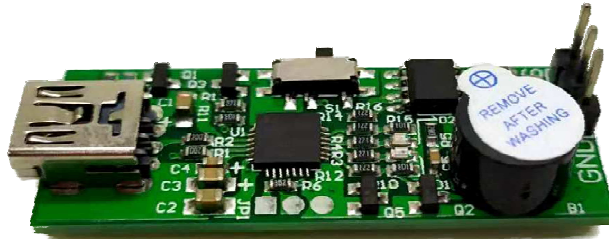


# Component-Shop

## Kingmax sail winch servo programmer.

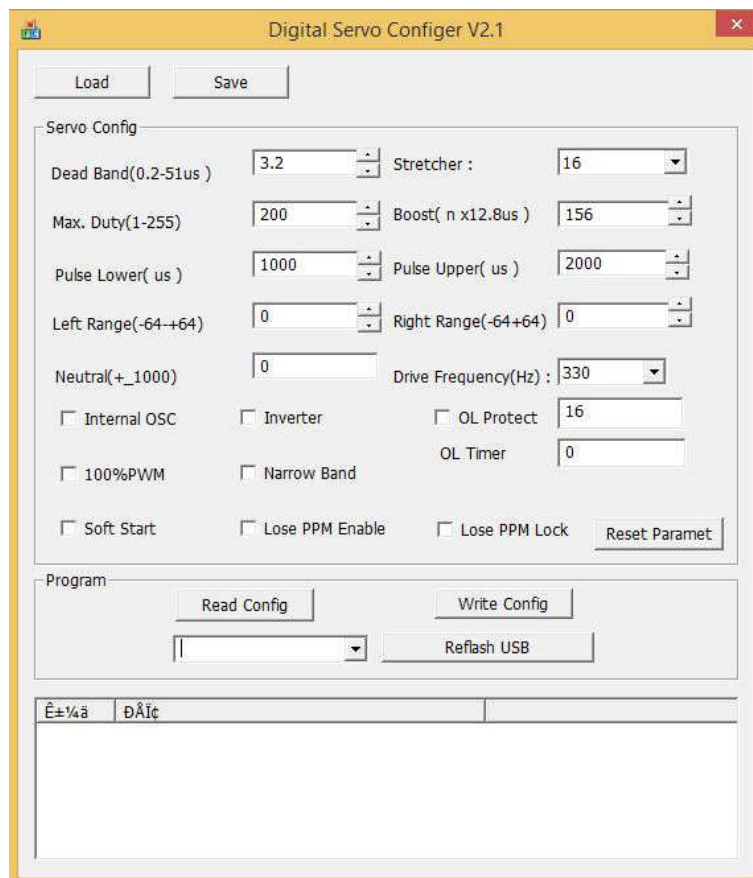
Model covered: SW6114MD

(61g 1-6 turn programmable sail winch servo)



1: Download & install the software from the Component-Shop website. Accessible from the servo programmer page on [www.componentshop.co.uk](http://www.componentshop.co.uk) - installation instructions are given with the download.

2: Connect the servo programmer to your computer using a USB cable and run the application DSConfig\_v2.1 & you should get the following screen.



3: Click on Reflash USB, you should get the current time, followed by some random characters displayed at the bottom of the screen.

4: Connect the servo to the programmer, the lead should be connected so that the negative wire (black with Futaba, brown with JR) is next to "GND" printed on the PCB of the programmer.

5: Set the Left Range & Right Range figures as per the table below to give the desired number of turns (end to end)

Turns	Left Range	Right Range
1	-55	-54
1.5	-51	-49
2	-46	-45
2.5	-42	-41
3	-39	-37
3.5	-34	-33
4	-30	-30
4.5	-26	-25
5	-22	-22
5.5	-19	-18
6	-14	-14
6.5	-11	-10
7	-6	-6

6: Click Write Config & you will get a beep from the programmer & that is it, your servo is programmed & ready to go. The display will update with a new time stamp & more random rubbish as below.

Digital Servo Config V2.1

Load Save

Servo Config

Dead Band(0.2-51us) 3.2 Stretcher: 16

Max. Duty(1-255) 200 Boost( n x12.8us) 156

Pulse Lower( us) 1000 Pulse Upper( us) 2000

Left Range(-64--+64) -14 Right Range(-64+64) -14

Neutral(+\_1000) 0 Drive Frequency(Hz): 330

☐ Internal OSC ☐ Inverter ☐ OL Protect 16

☐ 100%PWM ☐ Narrow Band OL Timer 0

☐ Soft Start ☐ Lose PPM Enable ☐ Lose PPM Lock Reset Paramet

Program

Read Config Write Config

v1.2a Refresh USB

Ë±%ã ÐÃİç

15:14:47 ²Ë¹|Ë°Ð´ËëEEPROM²Ë¹|

15:14:26 ÖÖµ½Ëë±,